

Plazma™

Note : Features varies depends on customer applications



Roboplazma
Customer
Photo Gallery

RoboPlazma Cutting Applications

Produces Tube Slots for knife connections	Processing of Beams, Columns, Channels & Angles	Produces Miter Cuts, Compound Miters & Double Compound Miters
Processing of large Steel Plates (2.5 x 12.0 mtr or larger)	Nesting of jobs for higher utilization of material	Beam Splitting & Beam Castellation
Marking with all Alpha Numerical Characters	Produces complete Stairs Stringers including lay-out	Produces lay-out on all sides
Produce AISC Quality Bolt Holes	Produces all Standard & Non-Standard Copes	Probing of the Raw Material for Mill tolerances & Automatic adjustment
Mouse Hole and Rat Hole Profile cutting	J-Allen Profile cutting	Pre-Measures the raw Material prior to processing
Processing of Square & Rectangular Tubing	Processing of all Round Tubes & Pipe without rotation	Unlimited hole sizes, (above 12 d) No tool changing required
Angular piercing for higher thickness to save Nozzles	Single, Double Beveling with Root & Contour	Auger Blade, Dish end and 3D Assemblies cutting

Plazma Technologies Pvt. Ltd.

Office No.-202, 2nd Floor ANSEC House, Tank Road, Yashwant Nagar, Shanti Nagar, Vishrantwadi, Pune - 411 006.
Tel.: +91-20-40700400 • Email: marketing@plazmasolutions.com
www.plazmasolutions.com

Authorised Distributor :

Plazma™

World's First & Only Plate & Beam Plasma Cutting system



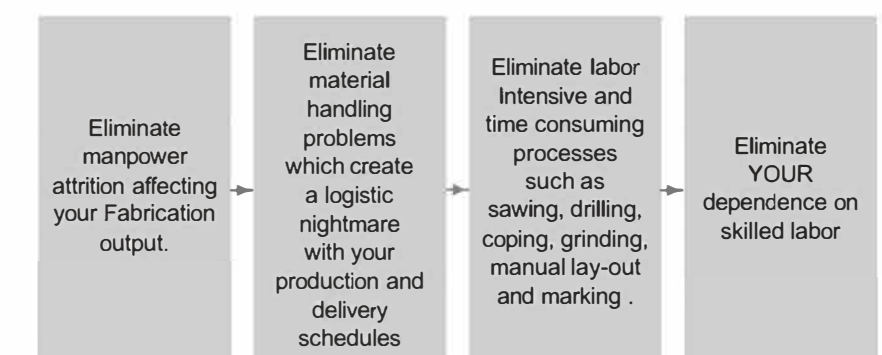
Plazma Technologies Pvt. Ltd. is focused on making YOUR Company an Equal player with an Unequalled Edge using our

RoboPlazma™ System.

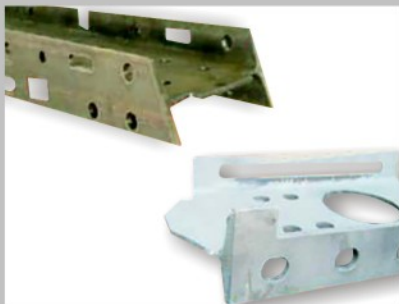
We have re-written the rule books earlier and we are re-writing the rule-books even now with Mega leaps in Technology. We at Plazma respect no Parallels and no other formula but Customer Innovation.

An ideal solution for small, medium and large fabricators that are looking for a single machine solution to fabricate Beams, Channels, Angles, Tubes, Pipes and also have Large Plate processing covered with the same machine.

RoboPlazma helps YOU to



ROBO PLAZMA



RoboPlazma™ Plate & Beam Processing System

RoboPlazma™ offers a 2D and 3D cutting capability that enables a variety of jobs to be processed with one system. This unique flexibility gives users the potential to meet multiple customer needs simultaneously. This faster, smarter, and cost effective solution transforms plant throughput.

The RoboPlazma™ system is manufactured with highest quality standard off the shelf components such as FANUC/Kuka Robots, Plazma/Hypertherm/ESAB plasma Power Supplies, KEMPER Dust Collectors, controlled by the user friendly RoboSwift™ Software.

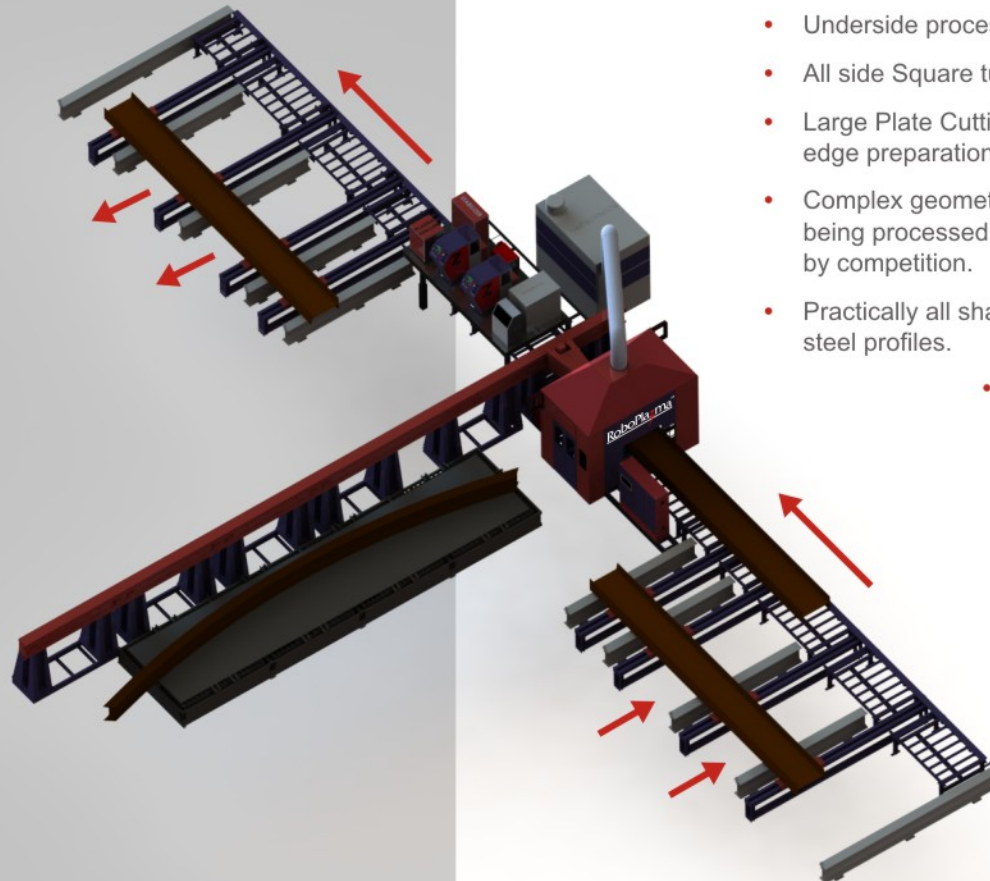
What Makes Us Unique?

RoboPlazma is a Shop floor tested Innovative design having 9 patents. A few of the many unique features are:

- Our Competitors have discounted moving robots as not being accurate. We have perfected a Vibration free Moving Cantilever design that delivers precision.
- Smart Modular Hardware enables system expandability. Roboswift is our simple 3 click software powering a machine that grows with you.
- Unlike our competitors RoboPlazma replaces more than 7 individual machines ensuring capital efficiency while saving space such as Band Saw, Drilling, Coping, Notching, Sq. Tube

Cutting, Marking machines & CNC Plate cutting.

- The capabilities unmatched by the competition are .
 - Underside processing without additional Robot.
 - All side Square tube processing.
 - Large Plate Cutting 2.5 x 30 Mtr. with weld edge preparation.
 - Complex geometries like Mouse Hole being processed which are not achieved by competition.
 - Practically all shapes cut on all structural steel profiles.
- Roboplazma expand beyond the competition to include
 - Welding.
 - Measuring
 - Curved Beam/ Pipe processing.
 - Dish End.
 - Vessels.
 - 3D Assembly.



Plazma™

RoboSwift™ 3 Click SOFTWARE

An in-depth understanding of plasma cutting process fundamentals & robot kinematics has resulted in RoboSwift™. This software works inside the controller to correct the errors of the robot. The operator needs zero robot programming knowledge & 3 clicks to output a ready to go Robotic program. Multiple inputs like DSTV, acad.dwg, acad.dxf are read by RoboSwift easily.

Technology center for support/ Training & Prove out

We realize with any automation project people training are critical & a high cost factor. We invite you to see the compressive investment we have made in a Tech Center that has

- Complete testing & prove out facility.
- Fully equipped with spares & servicing equipment.
- Remote diagnostic through onsite camera & factory web link.
- Two factory experienced engineers.

RoboPlazma™ Large Plate Processing

RoboPlazma™ enables various Large Plate (2.5 x 30 Mtr. with weld edge preparation) processes to be carried out on one machine in a single set up normally done at different locations in a plant. The combination of multiple processes on a plate with RoboPlazma™ eliminates repeated material handling and multiple machine setups, which leads to an increase of the entire plant throughput. Our combination of software, cutting process knowledge and robot motion makes the unique 'Breakaway Stitch' feature possible. A 'Breakaway Stitch' eliminates subsequent manual cutting of the stitch on the table. This dramatically increases efficiency by reducing the plate idle time on the worktable.

RoboPlazma™ Pipe & Tube Processing

Versatile moving cantilever enables a pipe to cut without rotation. Complex profiling Contour beveling, multiple connections of large / small diameter pipe & tube is possible. Highly intelligent & responsive 3D AVC control enables the RoboPlazma system to maintain an accurate distance between torch nozzle tip and pipe. RoboSwift™ can read inputs directly from BOCAD, XSTEEL, and STRUCAD etc.

RoboPlazma™ Parts Marking & Lay-Out

RoboPlazma is capable of marking Lay Out, weld Lines & part Numbers without Tool change. This eliminates use of an additional job marking station and speeds up the fabrication process. Plasma marking operation is fully integrated with offline RoboSwift™ programming with an auto parameter setting.

